



# TRANSPORTOR ORIZONTAL

# HORIZONTAL CONVEYOR

## TO

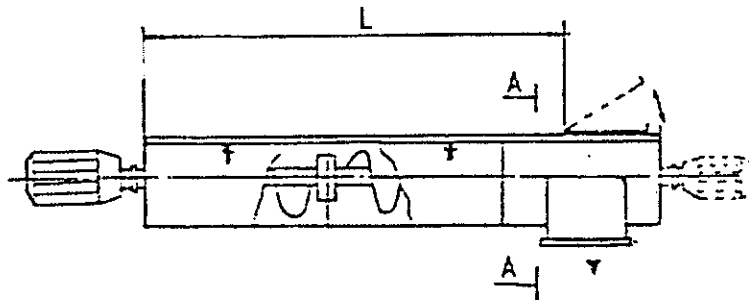
Tip Type	Ø Spira (min)	Capacitate Capacity 0 max (t/h)		L (max)		Dimensiuni/Dimension (mm)						
		C	F	C	F	A	B	C	D	E	F	M
TO 15	150	3,5	2	45	55	170	246	87	125	150	182	104
TO 20	200	8,4	4,5	40	45	220	296	112	150	175	232	129
TO 25	250	15,5	7	35	40	270	356	137	175	175	232	129
TO 30	300	30	16	30	35	320	420	163	200	230	332	179

Tip Type	Mat Trans	Cap. Capacity t/h	Motoreductor actionare/Lungime transportor(m) ; Motorgear/Conveyor width (m)							
			PRC 0,75 x 1500	PRC 1,1 x 1500	PRC 1,5x1500	PRC 2,2x 1500	PRC 3x1500	PRC 4x1500	PRC 5,5x1500	PRC 7,5x1500
TO 15	C	0,5 - 1	20	30	40	-	-	50		
		1 - 2	15	25	35	50	-			
		2 - 3,5	10	15	20	28	40			
	F	0,5 - 1	17	25	35	-	-			
		1 - 1,5	15	20	27	40	-			
		1,5 - 2	13	10	25	35	40			
TO 20	C	3,5 - 5	6	10	13	19	25	35	-	-
		5 - 7	5	7	10	13	18	25	35	-
		7 - 8,5	4	6	8	11	15	21	28	38
	F	2 - 3	10	14	20	28	40	-	-	-
		3 - 4	7	11	15	21	29	39	-	-
		4 - 4,5	7	10	13	19	26	35	-	-
TO 25	C	9 - 11	5	7	9	14	18	24	31	40
		11 - 12,5	4	6	8	12	16	21	28	37
		12,5 - 15,5	3	5	7	10	14	18	25	34
	F	4,5 - 6	5	7	9	14	18	34	31	40
		6 - 7,5	4	6	8	12	16	21	28	37
		7,5 - 9	3	5	7	10	14	18	25	34
TO 30	C	16 - 20	4	5	8	10	14	18	25	35
		20 - 25	4	5	7	9	12	17	22	33
		25 - 30	3	4	6	8	11	15	21	29
	F	9 - 12	4	5	8	10	14	18	25	35
		12 - 14	4	5	7	9	12	17	22	32
		14 - 16	3	4	6	8	11	15	21	29

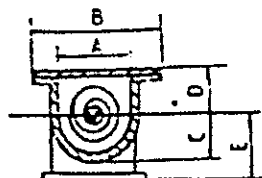
C = CEREALE / CEREALS

F = FAINA / FLOUR

Alte lungimi se pot executa la comanda



A - A



FLANSA IESIRE  
OUTLET FLANGE

